



Michigan Sonographers Society

42nd Annual

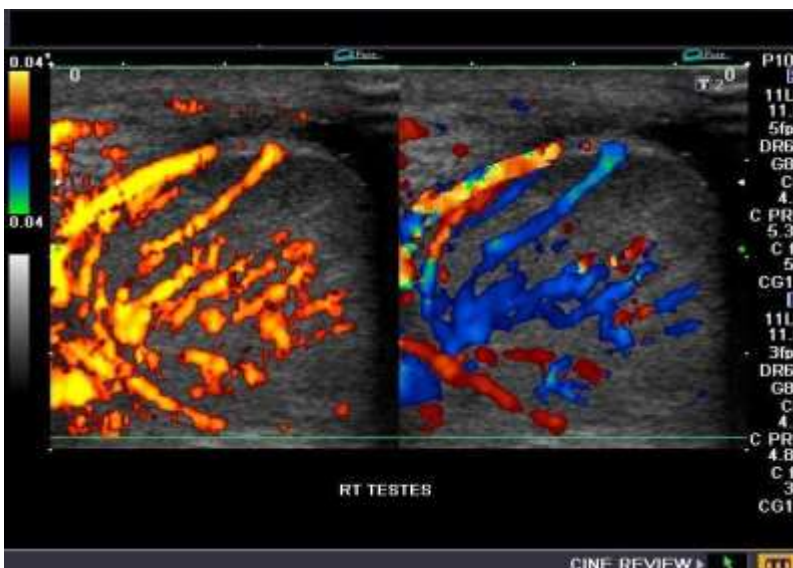
Spring Symposium

Saturday April 29, 2017



555 East Lafayette Street Detroit

Phone: 313-223-2999 / 877-424-5554



SDMS Approved 8 CME Credits

Sonographers \$150/ Students \$80 *Deadline April 15th*

To Register for this event:

Visit our website-

www.michigansonographersociety.org

Sponsored by:

American Medical Systems
Mindray/Zonare
Siena Heights University

General Electric
Philips Medical
Ferris College
Nanosonics

Samsung/Preferred Medical
Siemens Medical
Baker College

FACULTY



Teresa Wells, BS, RDMS, RVT – a Professor of General and Vascular Sonography at Lansing Community College. She has participated with the ARDMS on the Exam Development Task Force. Recently presenting at the SDMS 2015 National Convention in Dallas. She hold credential in Abdomen, OB/Gyn, Breast, Pediatrics, and Vascular.



Jill Trotter, BS, RT(R), RDMS, RVT – Director of the sonography program at Vanderbilt Medical Center in Nashville. Over 20 years experience in sonography, specifically, Abdominal, OB/GYN/ and vascular specialties. She has served the SDMS in various leadership roles. Her passion for education is fueled by the operator dependent nature of sonography. She strives to help sonographers understand all elements required to be an excellent sonographer for every patient.



Ivana Vettrai, M.D. attended the University of Michigan Medical School and completed her residency in obstetrics and gynecology as well as fellowship in maternal fetal medicine at Washington University in St. Louis. Currently she is a maternal fetal medicine specialist with Ascension Providence in Michigan and Associate Professor for Michigan State University College of Human Medicine. She was the first to introduce telemedicine service for maternal fetal consultation in Southeast and Thumb regions of Michigan. Dr. Vettrai is a popular speaker of the MSS



Educational Program

8 CME credits approved by SDMS

- 7:00 am **REGISTRATION / Continental Breakfast**
- 7:30 am **Welcome – Liz Lawrence, President**
- 7:45 am **ABDOMINAL DOPPLER:**
Cases of Where, Why, and How Jill Trotter, BS, RT(R), RDMS, RVT
- 8:45 am **STOMACH IN MY WAY** Teresa Wells, BS, RDMS, RVT
- 9:45 am **BREAK – Visit Vendors**
- 10:15 am **SONOGRAPHIC ABNORMALITIES**
of the Placenta and Umbilical Cord Ivana Vettrano, MD
- 11:15 am **COMPARING APPLES TO ORANGES:**
Correlating findings across imaging modalities Jill Trotter, BS, RDMS, RVT
- 12:15 pm **LUNCH**
- 1:30 pm **NON-LETHAL FETAL ABNORMALITIES:**
Where do they go from here? Jill Trotter, BS, RT(R), RDMS, RVT
- 2:30pm **SONOGRAPHIC ASSESSMENT OF FETAL WELL BEING**
The old and the new Ivana Vettrano, MD
- 3:30pm **BREAK – Visit Vendors**
- 4:00 pm **MALE GENITALIA** Teresa Wells, BS, RDMS, RVT
- 5:00 pm **HEART & SOUL: Evaluation of the Fetal Heart** Ivana Vettrano, MD
- 6:00 pm **Program adjournment**